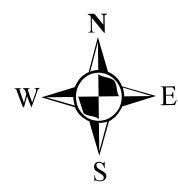


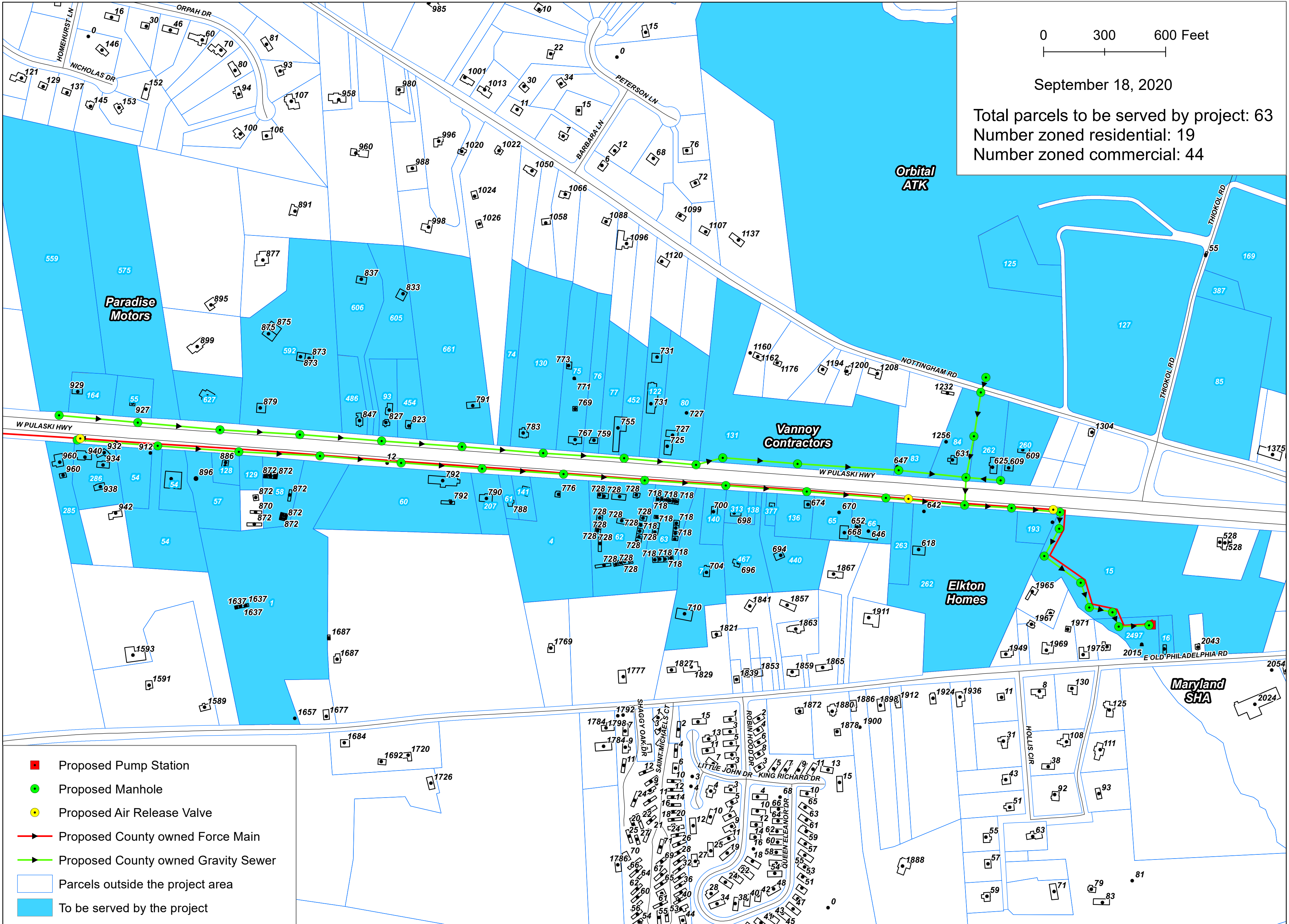
# Elkton West Sanitary Sewer Subdistrict - Phase 2 Mill Run Sanitary Sewer Extension



0 300 600 Feet

September 18, 2020

Total parcels to be served by project: 63  
 Number zoned residential: 19  
 Number zoned commercial: 44



- Proposed Pump Station
- Proposed Manhole
- Proposed Air Release Valve
- Proposed County owned Force Main
- Proposed County owned Gravity Sewer
- Parcels outside the project area
- To be served by the project